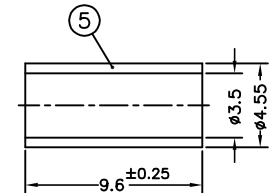
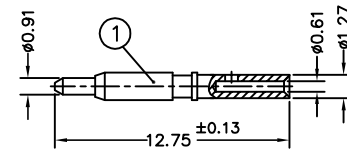
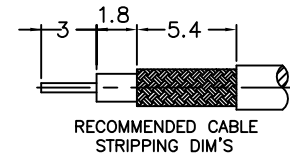
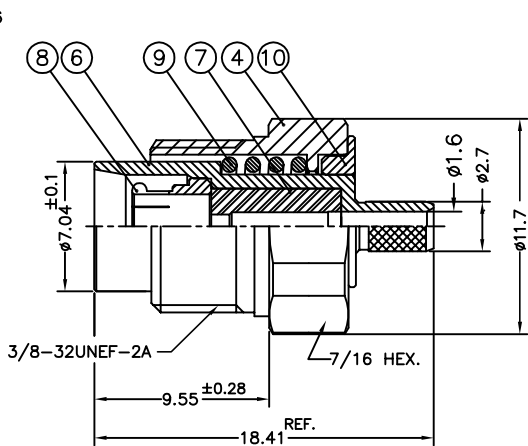
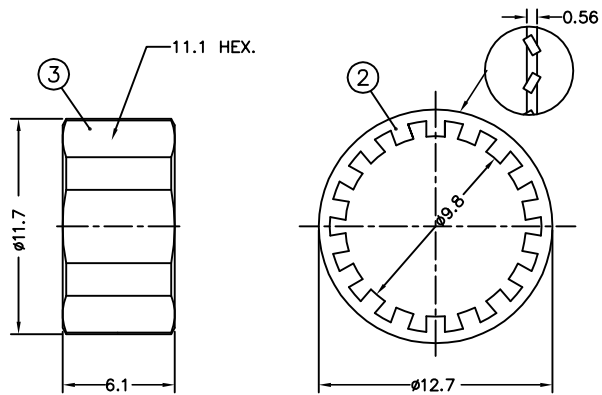


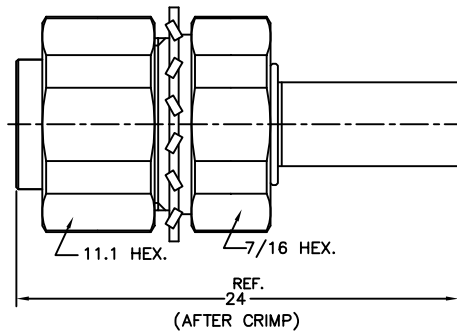
1	2	3	4	5	6	7	8
ISS	BEFORE REVISIONS	AFTER REVISIONS					



1.FERRULE TO CRIMPED THE HEX. SIZE .157"
2.CONTACT PIN TO CRIMPED OR SOLDER

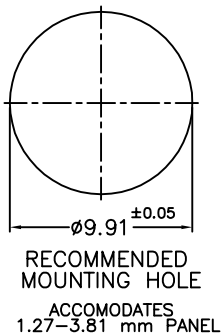
IDENTIFICATION	DESCRIPTION	QUANTITY
1	CONTACT	1
2	LOCK WASHER	1
3	NUT, 7/16 MONTING	1
4	PLUG ASSY	1
5	FERRULE	1

FERRULE IS ONLY COMPONENT IMPACTED ON PART NUMBER



Remarks:

- 1.MACHANICAL:
 - 1.1 INSERTION FORCE: 26.7N (6 lbs) MAXIMUM.
 - 1.2 WITHDRAWAL FORCE: 2.5N (0.5 lbs) MINIMUM.
 - 1.3 SPRING FORCE MUST ME GREATER THAN INSERTION FORCE.
 - 1.4 MINIMUM ALLOWAULE CENTERLINE TO OFFSET WITH MATED COMPONENT THAT STILL ALLOWS MATE TO OCCUR 0.75mm (INCLUSIVE OF CHAMFERED FLOAT)
 - 1.5 MINIMUM AXIAL FLOAT: 1.0 mm.
 - 1.6 MUST SURVIVE A MINIMUM OF 300 MATING CYCLES WITHOUT MECHANICAL FAILURE. OR ELECTRICAL DEGRADATION.
 - 1.7 WHEN CRIMPED TO CABLE, CRIMP MUST EXCEED 100N(22.5 lbs) FORCE IN PULL TEST (REF. MIL PRF-30912755F).
- 2.ELECTRICAL:
 - 2.1 DIELECTRIC WITHSTANDING VOLTAGE: 1000 RMS FOR 1 MINUTE.
 - 2.2 INSULATION RESISTANCE SHALL BE 5000 M Ohms AT 250V .
 - 2.3 INSERTION LOSS SHALL NOT EXEDDE 0.14 dB (DC 2.5GHZ)
 - 2.4 VSWR: 1.1 MAXIMUM AT (0-4GHZ)
 - 2.5 IMPEDANCE: 50 OHMS.
 - 2.6 CONTACT RESISTANCE: NORMALLY CLOSED CONTACT .002 OHMS MAX. CHANGE IN RESISTANCE AFTER CONDITIONING FOR INNER CONTACT, AND 0.003 OHMS MAX. CHANGE IN RESISTANCE FOR OUT CONTACT



10	RING	STAINLESS STEEL SUS 303	PASSIVATION
9	SRPING	STAINLESS STEEL SUS 304	N/A
8	OUR CONTACT	Be-Cu C17300	GOLD 30 MIN./NICKEL/COPPER
7	INSULATOR	TEFLON (MIL-P-19468)	N/A
6	BODY	STAINLESS STEEL SUS 303	PASSIVATION
5	FERRULE	COPPER	TIN 100 MIN./COPPER
4	NUT BODY	BRASS C3604	NICKEL 100 MIN. /COPPER
3	NUT	BRASS C3604	NICKEL 100 MIN. /COPPER
2	LOCK WASHER	BRASS C2680	NICKEL 100 MIN. /COPPER
1	CONTACT PIN	BRASS C3604	GOLD 30 MIN./NICKEL/COPPER
NO.	DESCRIPTION	MATERIAL	FINISH

ISSUE	0	SCALE	
UNLESS OTHERWISE SPECIFIED			
1) EDGES C0.15 MAX.			
2) REMOVE ALL BURRS			
3) SURFACE ROUGHNESS Ra16			
4) UNITS: mm			
DIMENSIONS DECIMALS		TOLERANCES ANGLES	
.x ±0.3		±2°	
.xx ±0.25			

PART NO.	-
APPROVED	Sam
CHECKED	Sam
DRAWN	yy.ma
DATE	2007-6-21

SLK	
TITLE	3.5MM PLUG BLINDMATE FOR RG174/U CABLE
DRAWING NO.	5BMM11S-A02
Company Website: http://www.superinkrf.com	